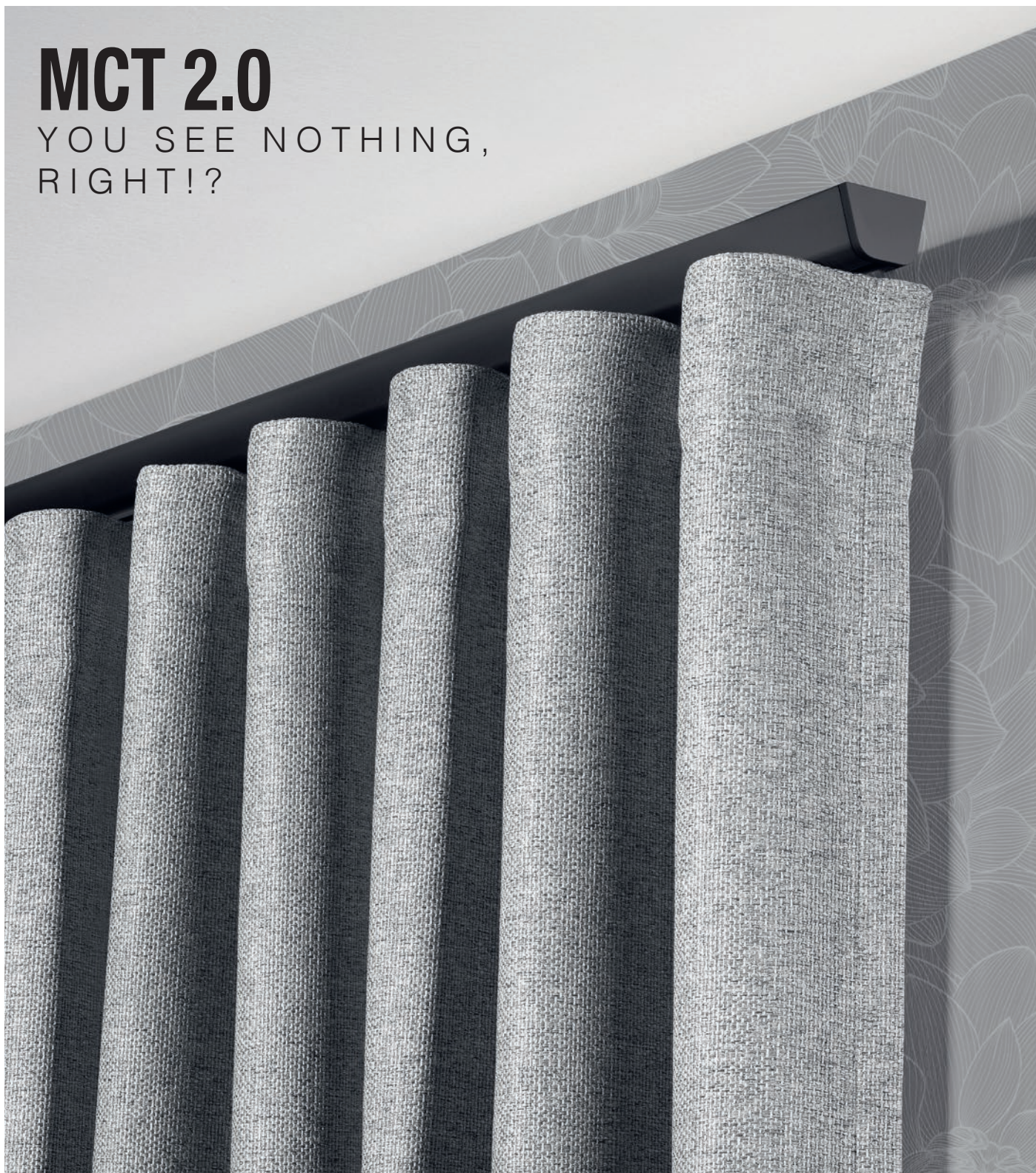


# MCT 2.0

YOU SEE NOTHING,  
RIGHT!?









# SMART INTO THE FUTURE

## SMART WINDOW DECORATION WITHOUT COMPROMISES

Many people are skeptical about digitalizing their homes or view new technologies more as a challenge rather than an opportunity to make life easier.

That's precisely why our innovative products focus on simple setup, barrier-free integration into existing SmartHome solutions, data security, and future-proof technologies.

We offer motorized curtain sets that are incredibly user-friendly, comfortable to operate, and can be controlled with various smart devices across different systems.

When planning interior design, SmartHome is becoming an increasingly vital component to ensure that all elements can work together in perfect harmony. Especially with window decorations, this often meant having to make compromises when choosing designs, finishes, or additional motor mounting options. We are revolutionizing motorized curtain systems and will offer you an unprecedented variety with nearly unlimited possibilities in the future.

We are proud to introduce Motor Technology 2.0, a revolutionary advancement in motorized curtain systems. This cutting-edge technology offers unprecedented variety and nearly unlimited possibilities, setting a new standard in home automation.

# REVOLUTIONARY

SIMPLE YET INNOVATIVE



Vesta works closely with the German manufacturer BÜSCHE, a pioneer in motorized curtain sets for almost 20 years. They were the first manufacturer who placed the motor behind the track, setting a new standard. With the development of the new Motor Technology 2.0, they are taking another revolutionary step and will revolutionize Vesta's NOVI, DECO [R], MOTOPIA, and PURTEC collections. The idea is as simple as it is innovative because now, regular curtain sets can easily be motorized. From the front and from the sides, motorized curtain sets can no longer be distinguished from classic ones.



## PERFECT TO THE LAST DETAIL

Prepare for a transformation in the motorized curtain system market. Thanks to a technical revolution from Germany and the latest cutting-edge technology, the necessary recess is now milled directly into the profile, ensuring a unified appearance and eliminating any visual deviations. This not only enhances the visual appeal but also brings numerous other benefits, marking a significant shift in the industry.

### THE NEW MOTOR TECHNOLOGY 2.0

Motorization reimaged and reduced to the essentials.

- \_ Visual perfection
- \_ Less components
- \_ Motorization made easy
- \_ Motor remains invisible and hidden
- \_ No additional fixing is required
- \_ Perfect wave decorations
- \_ Continuous gliding channels
- \_ Virtually silent operation
- \_ Environmentally friendly thanks to material savings
- \_ Improved pricing structures

### HAVE A LOOK BEHIND THE SCENES

Quality Made in Germany



Old Standard



New Motor Technology 2.0



# OUR COLLECTION

MOTOR AND CORD CONTROL



**NOVI 2.0** motorized with Motionblinds Bluetooth motor



**DECO [R] 2.0** motorized with Somfy motor



**DECO [R] 2.0** with cord control



**MOTOPIA 2.0** motorized with Somfy motor



**MOTOPIA 2.0** with cord control



**PURTEC 2.0** motorized with Somfy motor



**PURTEC 2.0** with cord control



**NOVI 2.0** with cord control





Motorized



Corded

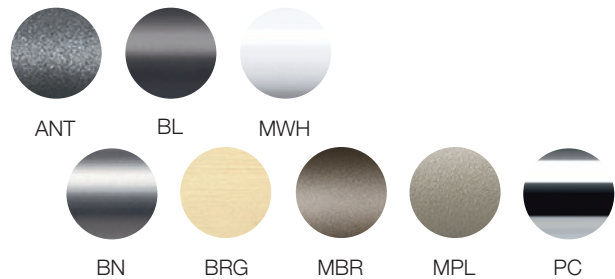


MADE IN GERMANY  
PRECISION ENGINEERING

# DECO [R] 2.0

## COLLECTION

The popular DECO [R] collection offers even more variety in terms of finishes, thanks to its rectangular profile, which is perfect for modern rooms and promises maximum design freedom with eight finishes, and three options for control: hand, cord and motor.



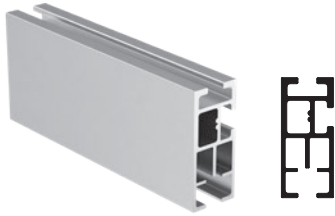
### AVAILABLE FINISHES:

Standard Finishes:  
ANT = Anthracite  
BL = Black  
MWH = Matt White

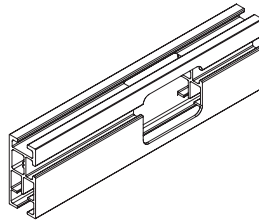
Premium Finishes:  
BN = Brushed Nickel  
BRG = Brushed Gold  
MBR = Matt Bronze  
MPL = Matt Palladium  
PC = Polished Chrome



## MOTOR 2.0 EQUIPMENT



Alu Track DECO [R] 2.0  
#424017 - 1.9/16"



CNC Milling



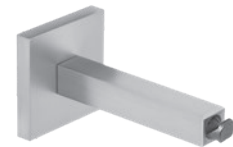
End Cap DECO [R] 2.0  
#421017- 11/16" x 1.9/16"



Single Bracket 2.0  
#422980 - 2.3/8"H x 3.1/2"P



Extended Double Bracket 2.0  
#422992 - 2.3/8"H x 3.1/2"-7.1/2"P



Wall/Ceiling Bracket  
#422780- 2"W x 3.1/2"P



Motionblinds Housing 2.0  
#424099-M



Somfy Motor Housing 2.0  
#424099-S



Return Pulley 2.0  
#421740

## CORD 2.0 EQUIPMENT



Cord Pulley 2.0  
#422683

## ADDITIONAL NOTES

Further information can be found in catalog 2024 page 47 for brackets, finials and other details.



Motorized



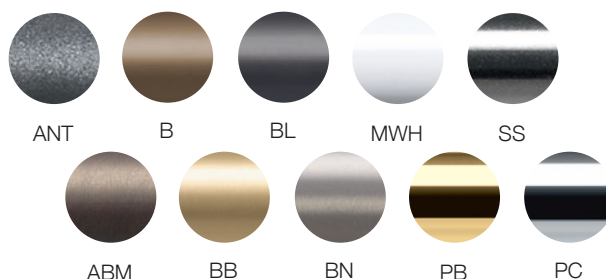
Corded



MADE IN GERMANY  
PRECISION ENGINEERING

# MOTOPIA 2.0

## COLLECTION



Vesta's MOTOPIA Collection features precision extruded decorative aluminum tracks powered by a belt driven motor. The silent system operates with a 5-channel (RF) remote control.

### AVAILABLE FINISHES:

#### Standard Finishes:

ANT = Anthracite  
B = Bronze  
BL = Black  
MWH = Matt White  
SS = Stainless Steel

#### Premium Finishes:

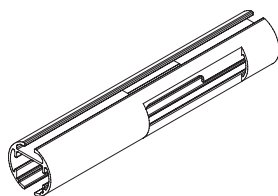
ABM = Antique Brass Matt  
BB = Brushed Brass  
BN = Brushed Nickel  
PB = Polished Brass  
PC = Polished Chrome



## MOTOR 2.0 EQUIPMENT



Aluminum Track  
#288085 - 1.1/8"



CNC Milling



Insert  
#909292 - 9/16" x 11/16"



Motionblinds Housing 2.0  
#915699-M



Return Pulley 2.0  
#915483



Somfy Motor Housing 2.0  
#915699-S

## CORD 2.0 EQUIPMENT



Cord Pulley 2.0  
#911683

## ADDITIONAL NOTES

Further information can be found in catalog 2024 page(s) 13, 56 for finials and page(s) 57, 63 for brackets.



Motorized



Corded

MADE IN GERMANY  
PRECISION ENGINEERING

# NOVI 2.0

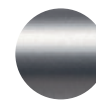
## COLLECTION



BL



MWH



BN



BRG

Vesta's NOVI Collection features precision extruded square aluminum tracks with meticulously machined bracket and finial designs. Several mounting possibilities make it a versatile collection suitable for any ultra-modern design scheme. Now also available as a motorized and cord version thanks to the new technology!

### AVAILABLE FINISHES:

Standard Finishes:

BL = Black

MWH = Matt White

Premium Finishes:

BN = Brushed Nickel

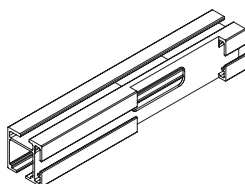
BRG = Brushed Gold



## MOTOR 2.0 EQUIPMENT



NOVI Track 2.0  
#252620 - 1"



CNC Milling



Insert  
#909292 - 9/16" x 11/16"



Somfy Motor Housing 2.0  
#252699-S



Motionblinds Housing 2.0  
#252699-M



Return Pulley 2.0  
#252683



End Cap 2.0  
#251026 - 1" x 1"

## CORD 2.0 EQUIPMENT



Cord Pulley 2.0  
#252679

## ADDITIONAL NOTES

Further information can be found in catalog 2024 page 51 for brackets, finials and other details.



# PURTEC 2.0

## COLLECTION



BL



MWH



BN



BRG



MPL



PC

The PURTEC collection is a German Design Award Special 2022. Available in six stunning finishes, and offered in three configurations: manual, cord control, and motorized.

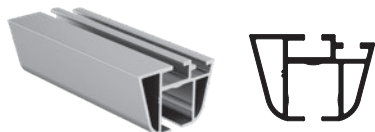
### AVAILABLE FINISHES:

Standard Finishes:  
BL = Black  
MWH = Matt White

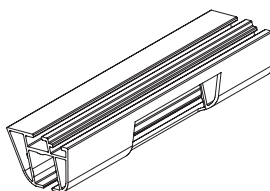
Premium Finishes:  
BN = Brushed Nickel  
BRG = Brushed Gold  
MPL = Matt Palladium  
PC = Polished Chrome



## MOTOR 2.0 EQUIPMENT



PURTEC Rail  
#329191- 1.1/4" x 1.3/16"



CNC Milling



Insert  
#329292 - 11/16" x 11/16"



Somfy Motor Housing 2.0  
#915679-S



Motionblinds Housing 2.0  
#915679-M



Return Pulley 2.0  
#915683

## CORD 2.0 EQUIPMENT



Cord Pulley 2.0  
#329183

## ADDITIONAL NOTES

Further information can be found in catalog 2024 page(s) 71, 79 for brackets, finials and other details.



# THE VESTA DIFFERENCE

## VISION STATEMENT

Vesta strives to provide our customers with a knowledgeable and courteous sales staff, prompt delivery, competitive pricing, and extensive product offerings that feature the most up-to-date decorative drapery hardware from around the world. Satisfying the customers' needs is our top priority. We value our relationships with our employees, customers, vendors, and suppliers. Our employees are the most valuable resource at Vesta. Together we will embark on the future while remembering the lessons that have brought us to where we are today.

## MISSION STATEMENT

Our mission at Vesta is to provide our clients with a compelling customer experience through a selection of drapery hardware to achieve their design ambitions.



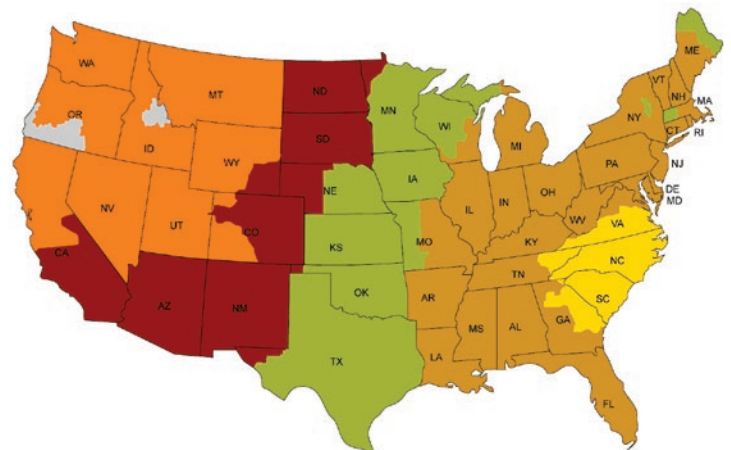
800.638.3782 - voice - 864.225.0228 - fax  
sales@vestadraperyhardware.com  
www.vestadraperyhardware.com



## SHIPPING TIME ESTIMATES

The chart below displays an estimated delivery time from our location in Pendleton, South Carolina via "regular ground" services. You may inquire about premium delivery options and estimated delivery charges at the time you place your order.

Vesta ships to locations in the domestic United States including Hawaii\*, Alaska\* and Puerto Rico\* (please call for estimated freight to destinations marked with an asterisk).



\*chart shows estimated regular ground delivery times – not guaranteed