

PURTEC

COLLECTION

The PURTEC collection is a German Design Award Special 2022. Available in five stunning finishes, and offered in three configurations: manual, cord control, and motorized.



AVAILABILITY:

Special order, 3-4 weeks, no returns

PRIMARY MATERIALS:

■ aluminum

DIAMETER & BRACKET REQUIREMENTS:

1.1/4" X 1.13/16"D: bracket required every 5-7 feet

SHIPPING & ADDITIONAL NOTES:

Splicing is not recommended in order to keep the system's structural and functional integrity.

AVAILABLE FINISHES:

BL = black
BN = brushed nickel
BRG = brushed gold
PL = palladium
PC = polished chrome

51



PURTEC MOTOR

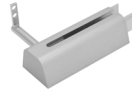
ALL HARDWARE



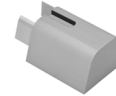
In-Line Motor Housing
#913246



Motor Housing (left)
#913299



Return Pulley (right)
#913283



Return Pulley (short)
#913284



Kevlar Belt Connector
#912494



Kevlar Belt
#912400



Somfy Glydea
Ultra 60e RTS
#912660



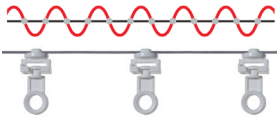
Somfy Irisimo
45 RTS
#912690



Remote
#912695
(RF) 5-channel



Charging Unit
#912696



Connected Snap Carrier
#907006 - 60% fullness
#907008 - 80% fullness
#907010 - 100% fullness
#907012 - 120% fullness



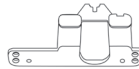
Butt Master Carrier
#909909 - w/snap [L]
#909910 - w/snap [R]



Glider
#912493
(black, grey, white)

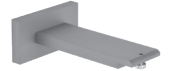


Underlap Carrier [L]
(white, grey, black)
#918808 - with snap

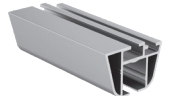


Overlap Carrier [R]
(white, grey, black)
#918809 - with snap

BRACKETS



Wall Bracket (Long)
#322713
3.1/8"W, x 1.9/16"H,
5.1/8"P



PURTEC Rail
#329191
1.1/4" x 1.13/16"D



f/Motor System
#329292
11/16" x 11/16"



Extension
#422735
1.3/8"L



Ceiling Bracket (Long)
#922280
2"W, 3.1/8"P



Ceiling Bracket (Short)
#902273
2"W, 1.11/16"P



Ceiling Bracket
#902474
5/8"W, 5/8"P





AVAILABLE FINISHES:

BL = black
 BN = brushed nickel
 BRG = brushed gold
 PC = polished chrome
 PL = palladium



ALL HARDWARE



Cord Connector
 #912200
 (black, grey, white)



Cord
 #912250
 (black, grey, white)



Cord Return Pulley w/Eye
 #329185
 2.1/8"L, x 1.13/16"W



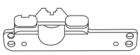
Cord Return Pulley (1-Way Draw)
 #329186
 2.1/8"L, x 1.13/16"W



Pulley (Cord Side)
 #329187
 2.1/8"L, x 1.13/16"W



Glider
 #912493
 (black, grey, white)



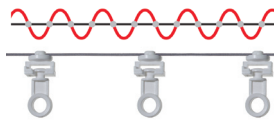
Underlap Carrier [L]
 (white, grey, black)
 #918808 - with snap



Overlap Carrier [R]
 (white, grey, black)
 #918809 - with snap




Butt Master Carrier
 #909909 - w/snap [L]
 #909910 - w/snap [R]



Connected Snap Carrier
 #907006 - 60% fullness
 #907008 - 80% fullness
 #907010 - 100% fullness
 #907012 - 120% fullness

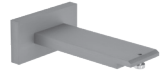
WARNING
ANSI/WCMA A100.1-2018 5.2.2



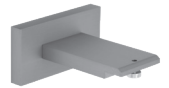
Cord Tension Device
 #997000 - 3"L

*If your window treatment includes a cord that creates a loop, you are required by law to install a tensioning device.

BRACKETS



Wall Bracket (Long)
 #322713
 3.1/8"W, x 1.9/16"H,
 5.1/8"P



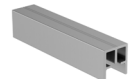
Wall Bracket (Short)
 #322709
 3.1/8"W, x 1.9/16"H,
 3.1/2"P



Extension
 #422735
 1.3/8"L



PURTEC Rail
 #329191
 1.1/4" x 1.13/16"D



f/Cord System
 #329292
 11/16" x 11/16"



Ceiling Bracket (Long)
 #922280
 2"W, 3.1/8"P



Ceiling Bracket (Short)
 #902273
 2"W, 1.11/16"P



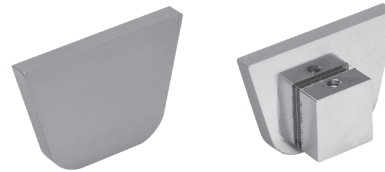
Ceiling Bracket
 #902474
 5/8"W, 5/8"P

AVAILABLE FINISHES:

BL = black
 BN = brushed nickel
 BRG = brushed gold
 PC = polished chrome
 PL = palladium



TRAVERSE TRACKS



End Cap (Flush)
#321046

ALL HARDWARE



Butt Master Carrier
#909909 - w/snap [L]
#909910 - w/snap [R]



Wheeled Butt Master
#909906 - w/snap [L]
#909907 - w/snap [R]
*available in black, brown or white



Track Stop
#908992 - white
#908992B - black

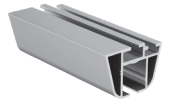


Roller Glide small
#906575 - white

*not available in PC

Wand

#966100
#966125
#966150



PURTEC Rail
#329191
1.1/4" x 1.13/16"D



Extension
#422735
1.3/8"L



Ceiling Bracket (Long)
#922280
2"W, 3.1/8"P



Ceiling Bracket (Short)
#902273
2"W, 1.11/16"P



Ceiling Bracket
#902474
5/8"W, 5/8"P



Track Connector
#908993



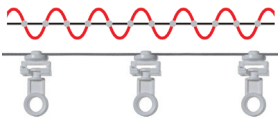
Swivel Track Connector
#908994



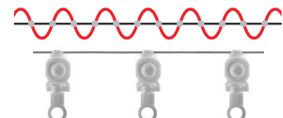
Roller Glide large
#906520 - white
#906521 - black



Swivel Glide
#906525 - grey



Connected Snap Carrier
#907006 - 60% fullness
#907008 - 80% fullness
#907010 - 100% fullness
#907012 - 120% fullness



Ball Bearing Roller Carrier
#906706 - 60% fullness
#906708 - 80% fullness
#906710 - 100% fullness
#906712 - 120% fullness



Underlap Carrier [L]
#909903 - w/o snap
#909905 - with snap



Overlap Carrier [R]
#909902 - w/o snap
#909904 - with snap